

RISING STARS



Bright Futures Newsletter
Spring 2021 Edition



It has become something of a cliché to talk about the last year as being one 'like no other'. So much of the year's usual rhythm was interrupted by the necessary restrictions under which we have all been living. Some things, however, remained predictable. The seasons took us from a lovely, sun drenched late spring and early summer into a rather more mixed picture in August before once again we battered down the hatches against the ravages of autumn and an unusually snowy winter. Our thoughts are now once again turning to the spring with all its promise of regeneration and new life.

There is no doubt that the pandemic will continue to present further challenges in the weeks and months ahead. It's unlikely that we will be able to fully enjoy the freedoms we took for granted prior to COVID19. There are, however, genuine reasons to be hopeful with much to celebrate and the promise of more positive times ahead. The success of vaccine development and deployment means that many of us will enjoy good protection from the most harmful impacts of the COVID19 virus and I am sure this will increase our confidence to free

ourselves gradually from the protection of staying mainly at home and avoiding social contact in person.

Spring signals much more than 'recovery' however. It is genuinely a time for growth and renewal, themes that are particularly pertinent in Bright Futures just now. Of course we want to claim back some of the 'normal' ways we miss so much and I am not naïve enough to believe that we will all be suddenly transformed by events into a brave, new and unrecognisable world. There are many things that we will be glad to get back to and continue much as we did before. Equally, the growth of the Trust, the welcoming of new people and communities coinciding with such a moment in our history means that we should not miss the chance to spot every opportunity for positive change, for different and better approaches and the chance to capitalise on new perspectives.

Working with young people throughout my career has taught me never to underestimate the resilience of youth, never to cast aside novel ideas born of inexperience and an appetite for risk and always to embrace new opportunities,



even when they're not fully formed. This edition of 'Rising Stars' brings together fine examples of the collective energy, optimism and hope across Bright Futures, with everyone playing their part to ensure that we make progress together. I am so grateful for all that we continue to achieve, for the gifts of our colleagues, young people, families and communities and for the collaborative spirit that has sustained us and will continue to energise us in our recovery and renewal.

Dr John Wm Stephens CBE
Chief Executive Officer,
Bright Futures Educational Trust

Merger expands our Trust

We are delighted to announce that since we welcomed The Dunham Trust into Bright Futures last term, the integration has been going very well and everyone is building strong new relationships and really enjoying working together.

The Dunham Trust was formed in 2013 and includes five schools: The Orchards, Acre Hall Primary School, Lime Tree Primary Academy, Elmridge Primary School and Barton Clough Primary School.

A lot of work has gone on for the last few months, looking at every aspect of the merger. By combining the two Trusts we have entered an era of expansion, continued growth and development. We all share similar educational visions and already have closely aligned values focused on community, integrity and passion.

We are thrilled to be sharing news from all the new Trust academies in this newsletter, alongside all of our other schools in Bright Futures.





Expansion at Melland

Manchester Local Authority has approved a £3.8m expansion at Melland, increasing the school's capacity by 70 pupil places.

Bright Futures worked closely with the school to create its feasibility study and our positive working relationship with the Local Authority has helped to ensure that this has been a very successful and satisfying process so far, one that will benefit local youngsters with special educational needs a great deal.

Manchester is a huge city and as such is under growing pressure to accommodate the rising numbers of children with complex educational needs.

The expansion at Melland will involve a two-storey extension providing an additional six to eight classrooms over the ground and first floors along with associated infrastructure in order to meet the needs of more students. The work is expected to commence this September and is fantastic news for the school, the Trust and the local community.



Keeping healthy



Asian History Month

Cedar Mount Academy celebrated Asian History Month with a range of activities and special lessons. In Business Studies, pupils studied The Corner Shop by Babita Sharma (with a thanks from her on Twitter!), Geography classes created presentations about environmentalist Licypriya Kangujam and in History, students learnt about Al-Kindi and his contribution to cryptography. Classroom doors were decorated with Asian heroes including MIA, Tran Thi Nga, and Asha Dvos, to name a few, while traditional food and dress were celebrated – and students had a great time learning the style of Kathak, one of the eight major forms of Indian classical dance.



Pupils from The Orchards spent the first part of last term focusing on five ways to Wellbeing, to keep connected from home or within bubbles - and as part of this, enjoyed yoga sessions organised by Feather & Rock. PE challenges at South Shore meanwhile, have meant lots of different fitness activities and awards. We have been so proud of how all our academies have stayed connected throughout the lockdowns, as well as how our learners settled back into school upon their return.





New playground at Acre Hall

Acre Hall has a fantastic new outdoor classroom area which has been a focal point of many lessons at the school. Pupils had a great time submitting plans for the area - with ideas including a hot tub, an ice cream shop and trampolines! – and are now getting actively involved in creating a space that works for everyone, with generous donations from local organisations including the nearby garden centre.



World Book Day

World Book Day was a little different this year, but our academies still celebrated their love of reading in a range of ways. Teaching staff at Lime Tree Academy created a Masked Reader challenge in which they wore digital disguises to read stories, while the pupils tied their reading in with the end of Sleep Awareness Week to look at how reading can help with sleep routines and mindfulness. Teachers from Rushbrook had to take on author identities while pupils at Stanley Grove enjoyed outdoor reading sessions to make the most of the good weather.



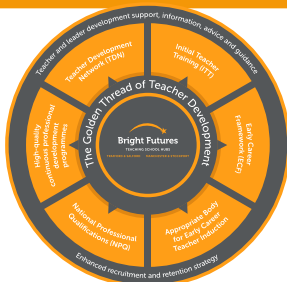
Stress Awareness Month

April was Stress Awareness Month. Stress is a major problem today and everyone reacts differently to it, but too much stress can lead to longer term mental health problems like anxiety and depression. Mental ill health costs UK employers £34.9 billion each year according to Mental Health First Aid England and these last 12 months have of course brought more stressful situations to all of us. The Alliance for Learning has a range of mental health courses that might be of use.

Information on the range of Mental Health First Aid and mindfulness courses can be found here. <http://allianceforlearning.co.uk/cpd/mental-health/> and <http://allianceforlearning.co.uk/cpd/mindfulness-and-wellbeing/>



Celebrating Teaching Hub Success



Bids from Bright Futures to launch two new Teaching School Hubs have been successful, our Trust has been designated with two Teaching School Hubs by the Department for Education. The new Hubs for Salford & Trafford, and Stockport & Manchester, will build on and bring together all the good practice that already exists, making collaboration more structured and celebrating all the work already going on in the region. There are no great schools without great teachers and professional development for teachers has undergone considerable reform and refresh with the Early Career Framework and the new National Professional Qualifications.

Teaching School Hub Leadership Team



Lisa Fathers
Director of Development,
Partnerships & Teaching
School Hubs



Eleanor Davidson
Deputy Director of Teaching
School Hub ECT/ITT
Manchester/Stockport



Jayne Carmichael
Deputy Director of Teaching
School Hub NPQs/CPD
Trafford/Salford

At the heart of this 'golden thread' of teacher development are our new Teaching School Hubs, school-led centres of excellence for professional development. This infrastructure will be inspected by Ofsted to ensure it is of the highest quality. The 'golden thread' of teacher development is underpinned by high-quality evidence and supports the entirety of a teacher's career.



Marton's new provision

Exciting times at Marton Primary Academy as it has partnered with Blackpool Children's Services, to develop an additionally resourced provision on site for nursery and primary aged children with moderate learning difficulties (MLD) and children with autistic spectrum disorders (ASD).

Some pupils who have an Education and Health Care Plan (EHCP) to meet their special needs require a higher level of specialist support than can be provided in a mainstream setting. However, their needs are not so complex that they require a place at a special school. This is where Marton will come in, having opened a 32 place Additionally Resourced Provision (ARP) with effect from 2021.

This is wonderful news and we look forward to hearing all about the success of the new provision.



Music and Dance at AGGS

Music was a real connector for many people during Lockdown 3 - and the students at AGGS were a great example of this. As well as a fantastic saxophone session, dance routines were created by students at home. Both of these can be viewed on the school's YouTube channel - we highly recommend a watch. <https://www.youtube.com/watch?v=IYsDPwh4ReQ>



Red Nose Day

Schools all over the UK dressed as superheroes to celebrate Comic Relief last term and our schools were only too happy to get involved, with fantastic outfits here from Barton Clough and Elmridge.



In the media

The news about the two new Teaching Hubs was reported by a number of regional business publications.

Department Of Education Approves Two New Teacher Training Hubs In Greater Manchester



Dept of Education approves 2 new teaching hubs in Greater Manchester

